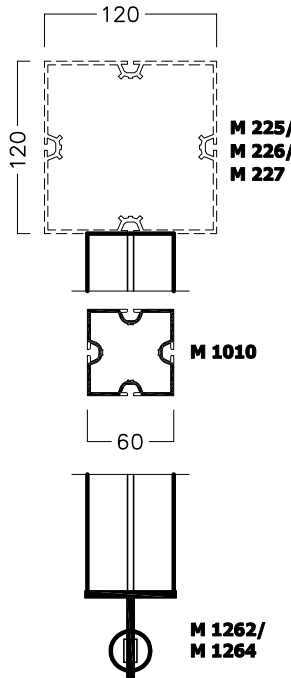
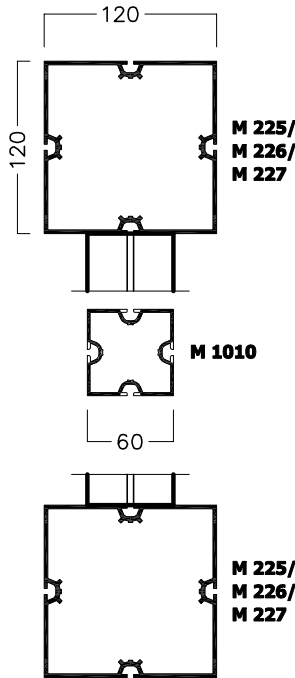


"VERSION No. 1"



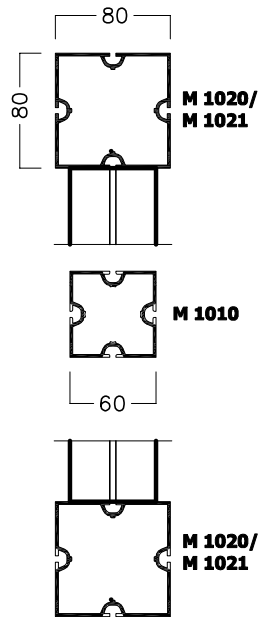
- 7 axes
- 8 axes
- 10 axes
- 12 axes
- 14 axes

"VERSION No. 2"



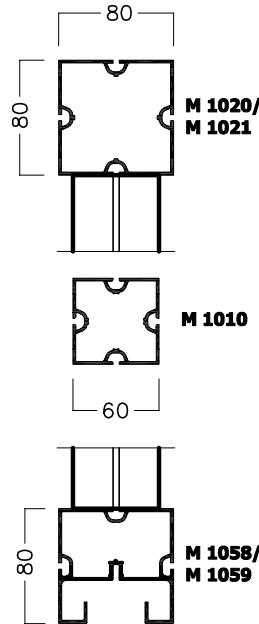
- 7 axes
- 8 axes
- 10 axes
- 12 axes
- 14 axes

"VERSION No. 3"



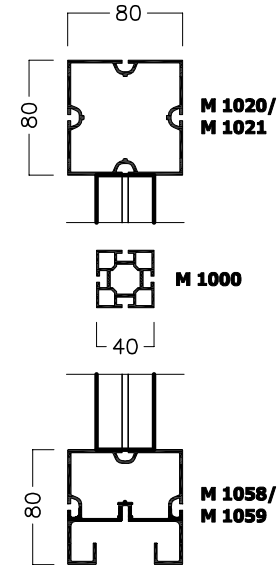
- 6 axes
- 7 axes
- 8 axes
- 10 axes

"VERSION No. 4"



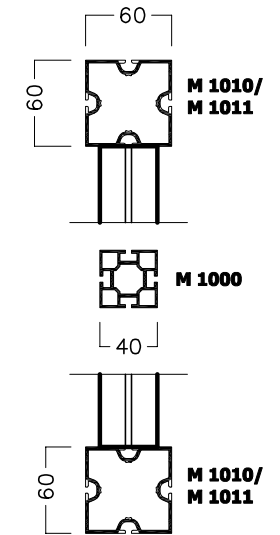
- 6 axes
- 7 axes
- 8 axes
- 10 axes

"VERSION No. 5"



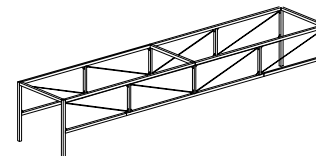
- 6 axes
- 7 axes
- 8 axes
- 10 axes

"VERSION No. 6"



- 5 axes
- 6 axes
- 7 axes

IMPORTANT! Single beam tends to twist sidewise.
We recommend parallel mounting including lateral bracing



TIM-41.0 EW 2873-30 27.08.07/WG, geät: 28.01.08/HB 01/2008 shift