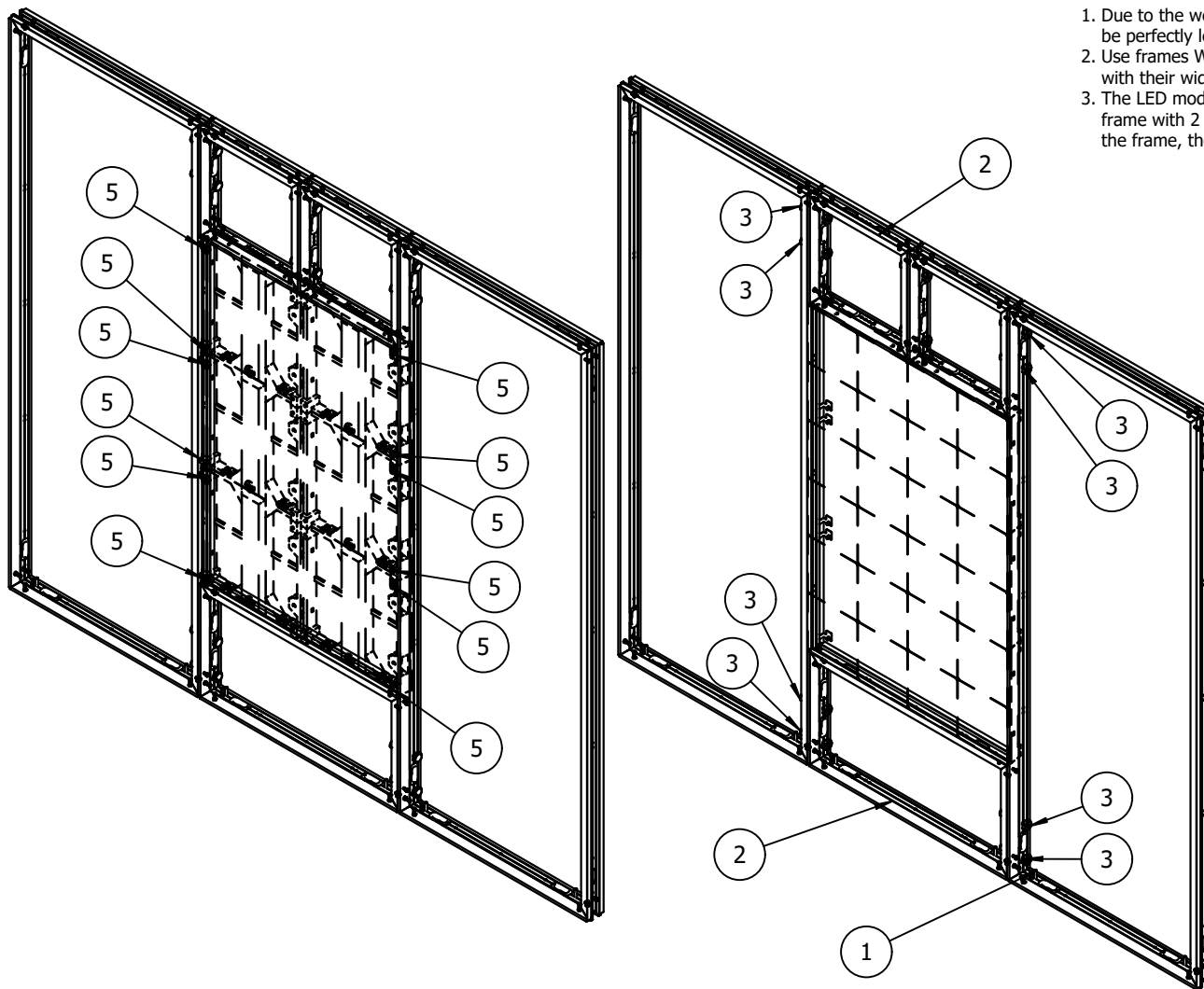
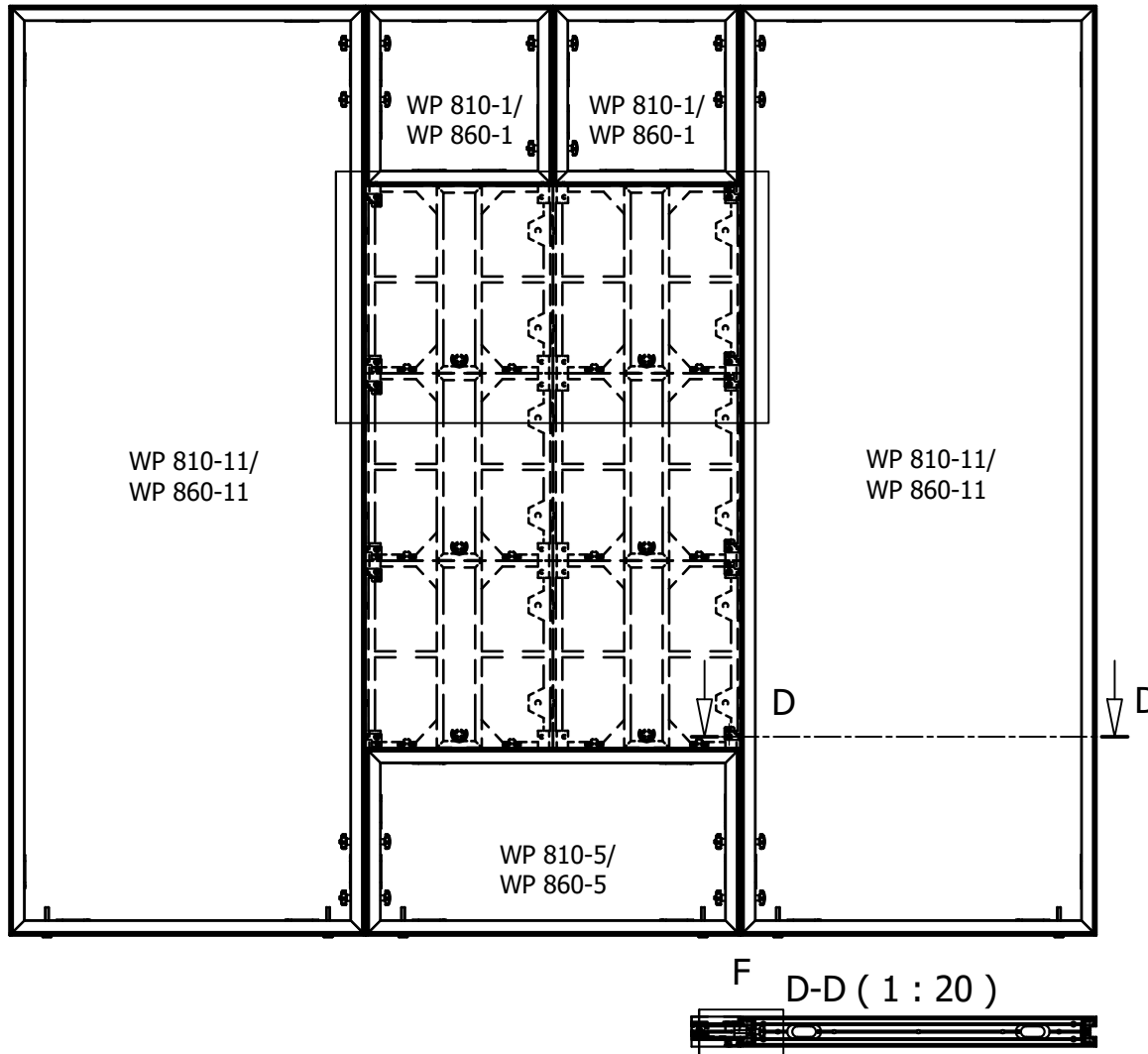


To be observed when mounting LED Modules

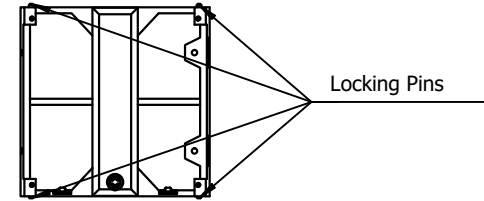
1. Due to the weight of the modules, the frames must be equipped with feet so that they can be perfectly leveled.
2. Use frames WP 810-1 - WP 810-6 / WP 860-1 - WP 860-6 to install LED modules to comply with their width of 500 mm.
3. The LED modules must be enclosed by frames. The frames must each be secured to the next frame with 2 WP 80-1 quick connectors. If this is not possible through the connecting holes in the frame, the M10 threaded hole for foot mounting can be used as well.



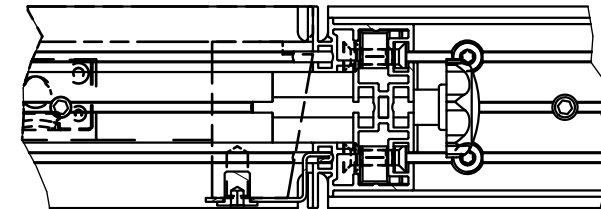
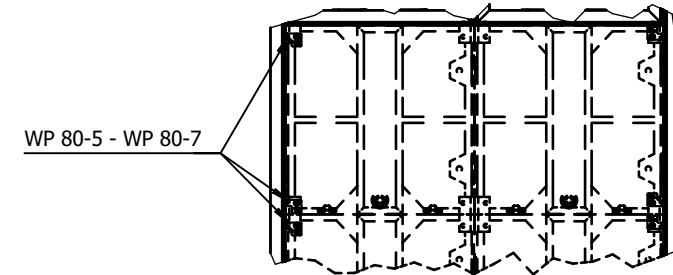
All dimensions in mm!
The drawing with dimensions basically remains valid!



4. The LED modules of the top and bottom row must first be prepared for installation by unscrewing the locking pins



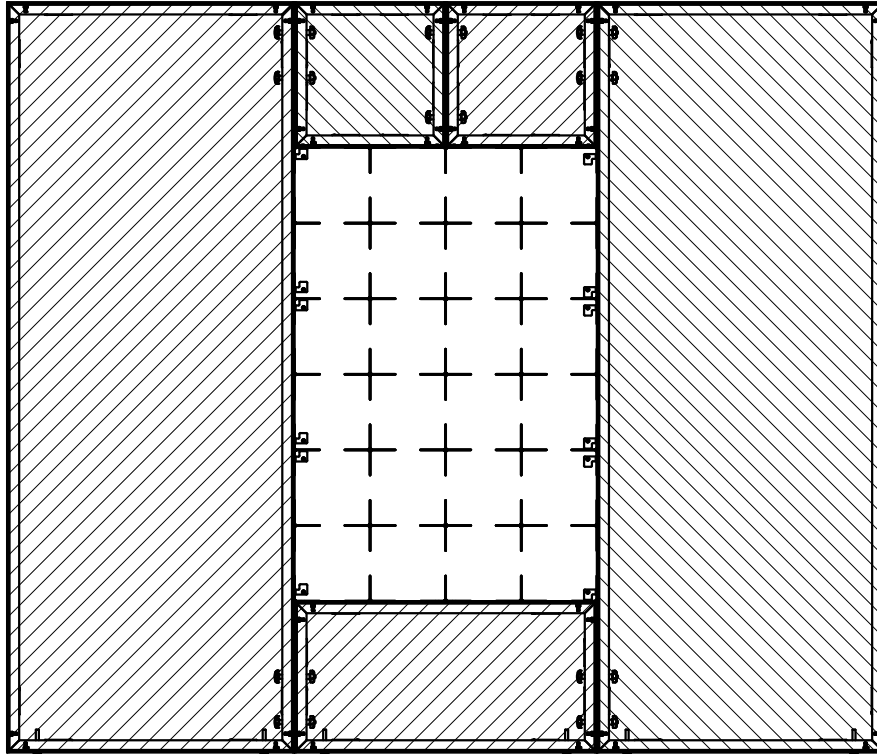
5. The LED modules tested by octanorm for octawall pro frames are installed with LED panel hooks WP 80-5 - WP 80-7. These LED panel hooks are attached to the vertical outer edges of the LED array in each M10 fixing hole of the LED modules. The LED panel hooks are inserted into the groove of the extrusion.



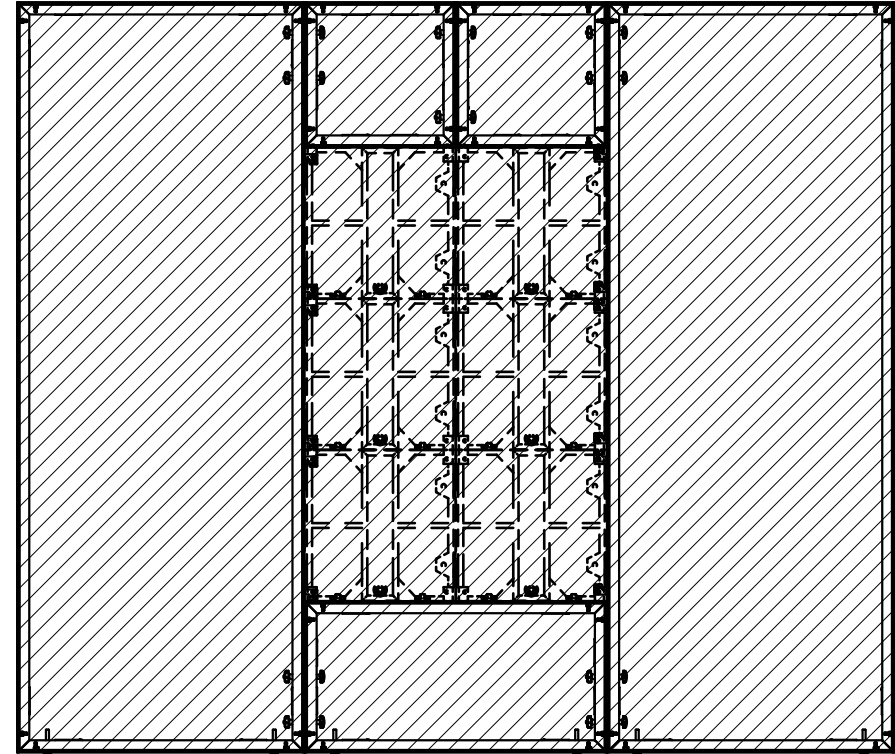
6. When wiring the modules, make sure that the cables do not protrude beyond the back of the frame system. The connections of the LED module unit must be routed through the cable protection WP 80-8. For the connection to the frame extrusion, the panel hooks are inserted into the groove of the extrusion.

All dimensions in mm!
The drawing with dimensions basically remains valid!

Front



Back



Fabric covering with LED module installation

The front can be covered with fabric frame by frame or cladded with panels.

If the back is to be covered with fabric, a frame on each side of the LED module assembly must be included. This is the only way to cover the back of the LED module assembly.

All dimensions in mm!
The drawing with dimensions basically remains valid!